

A. How to start AliEditor

Run AliEdiot.exe

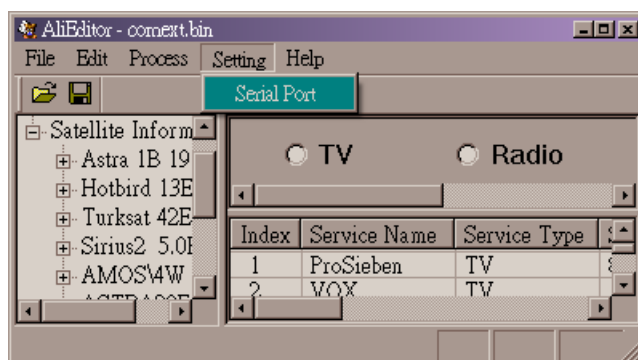


B. How to create your channel list from live signal

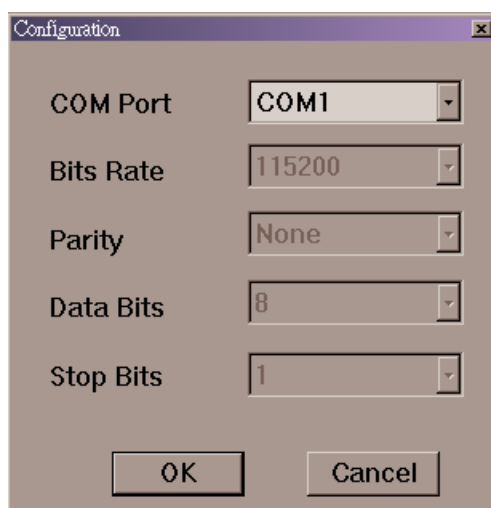
1. Use your receiver to scan from the live signal as the usual ways.
2. Follow the guide of **How to upload the flash from Receiver** to upload the bin to PC.
3. Follow the guide of **How to edit channels in AliEditor** to edit the channels.
4. Follow the guide of **How to download a S/W release to receiver** to update your receiver.

C. How to configure the RS232 port

1. Connect with a *twisted* RS232 cable between the receiver and your PC.
2. Choose **Setting/Serial Port**



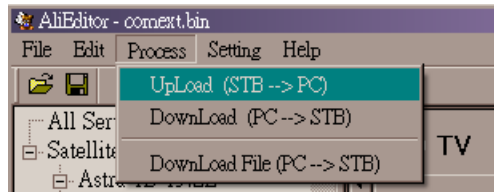
3. Select the COM Port on your PC to connect the receiver .



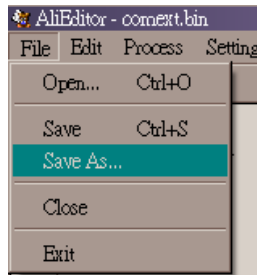
C. How to upload the flash from Receiver

First you have to follow the guide of How to configure the RS232 port to setup the COM port.

1. By **Process/Upload(STB→PC)** you could upload the flash bin from the receiver to PC.



2. Select **File/Save** or **Save As** to save the uploaded bin to a bin file on PC

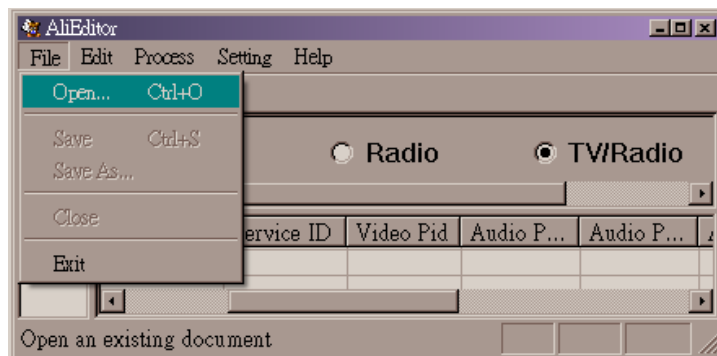


3. There may be a dialog prompts to request to input a filename to save.

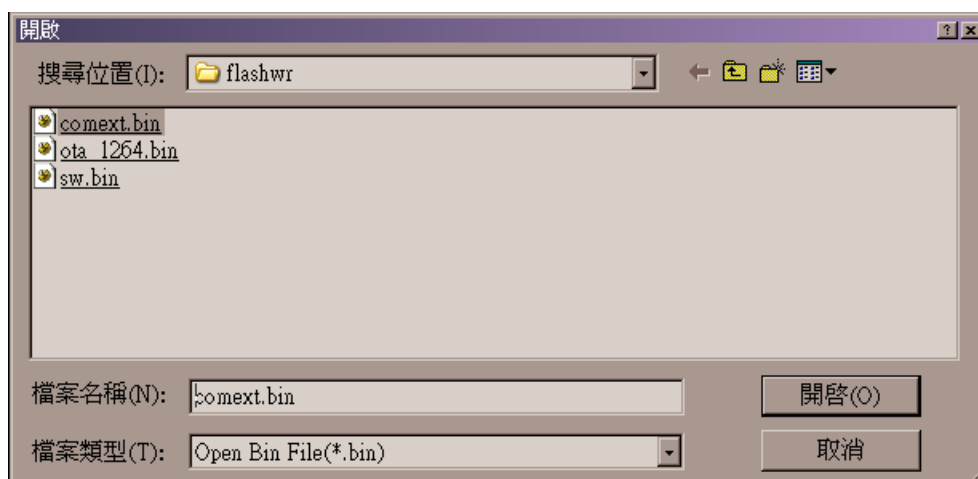
D. How to download a S/W release to receiver

First you have to follow the guide of How to configure the RS232 port to setup the COM port.

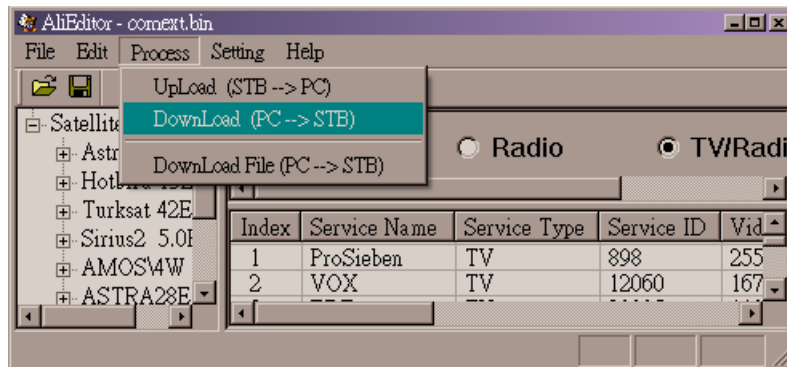
1. Select **File/Open**



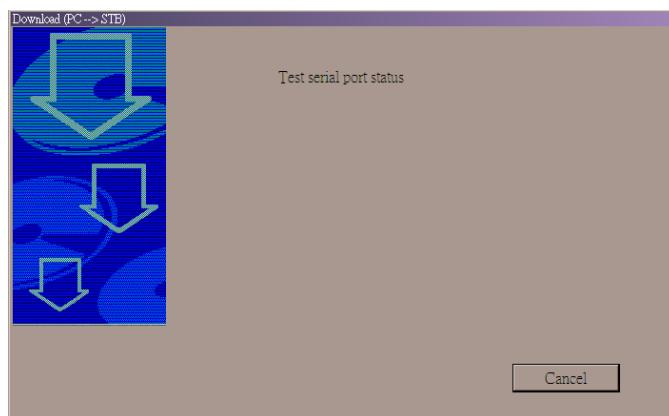
2. Select the bin file to download



3. Before RS232 communication, please turn off your receiver
4. Select **Process/Download (PC→STB)**

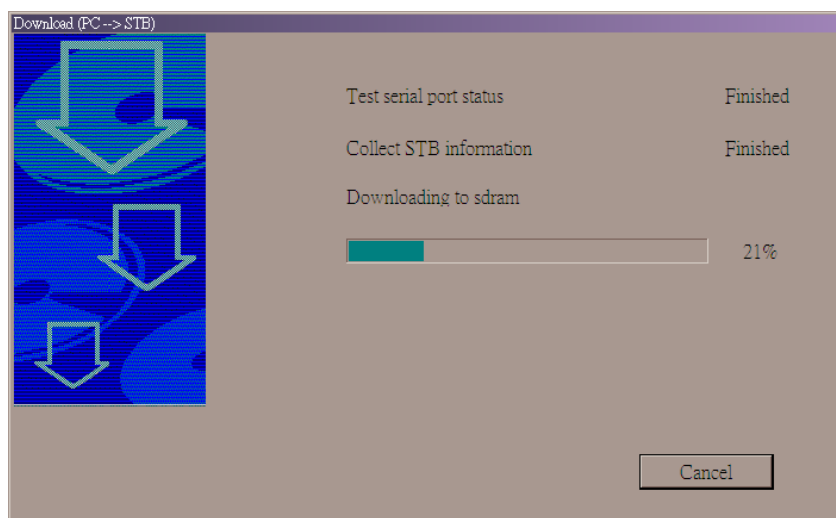


5. AliEditor will start testing the serial port.



6. Turn on your receiver after step 5.

7. PC starts communication with the receiver. And this time the TV connected with the receiver is blanked off, But the progress bar in AliEditor keeps going.

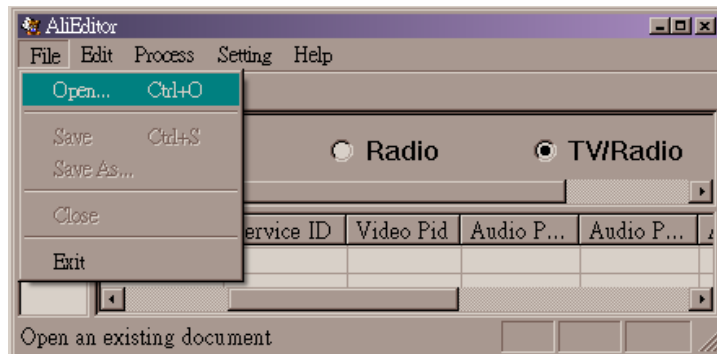


8. When the connection completed, receiver will start burn flash. Please **do not turn off** the receiver at this time in case the receiver system destroyed.

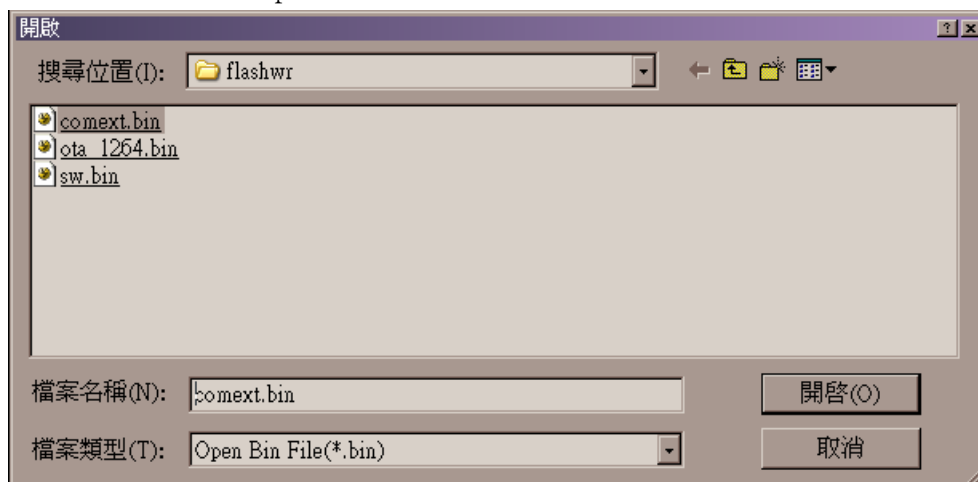
9. After flash burning completed, the receiver would reboot automatically.

E. How to edit channels in AliEditor

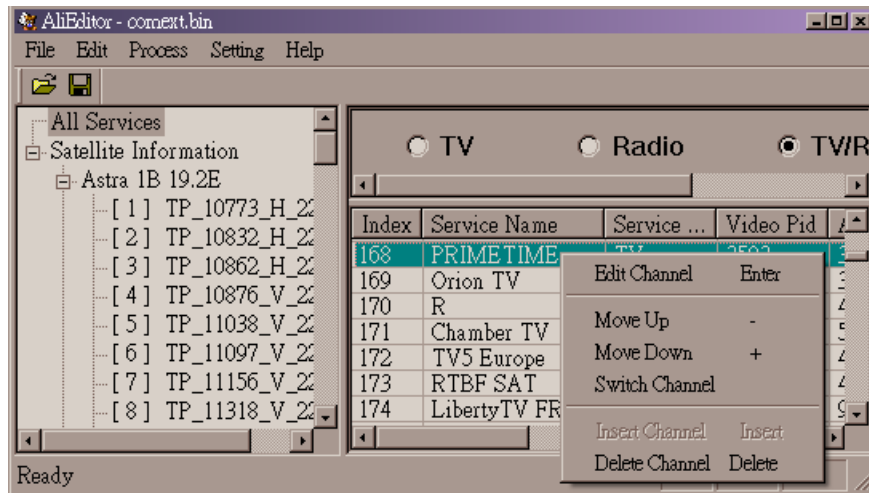
1. Select **File/Open**



2. Select a bin file to open



3. In All Services mode, right click the mouse on a channel in the channel list could bring up a context menu which shows all the editing features.



3.1 Edit Channel



3.1.1. Service ID usually could be referenced as SID on some satellite program web. If you enter value in this field, the channel would decide its program ID dynamically. (Dynamic PID) By doing this you do not need to manually enter the video/audio/PCR PID field.

3.1.2. You could manually decide the PIDs in a channel if you fill a zero value in the Service ID field.

Program Information

Channel Name	<input type="text" value="ZDF"/>
Channel Type	<input type="text" value="TV"/>
Service ID	<input type="text" value="0"/>
Video Pid	<input type="text" value="110"/>
Audio Pid1	<input type="text" value="121"/>
Audio Pid2	<input type="text" value="0"/>
Audio Pid3	<input type="text" value="0"/>
PCR Pid	<input type="text" value="110"/>
Group	<input type="text" value="None"/>
Favorite	<input type="text" value="Yes"/>
Scramble	<input type="text" value="No"/>
Factory	<input type="text" value="No"/>

3.2 Change the channel order

Move Up	-
Move Down	+
Switch Channel	

Using the **Move Up/Move Down/Switch Channel** you could change the channel order in All Services mode.

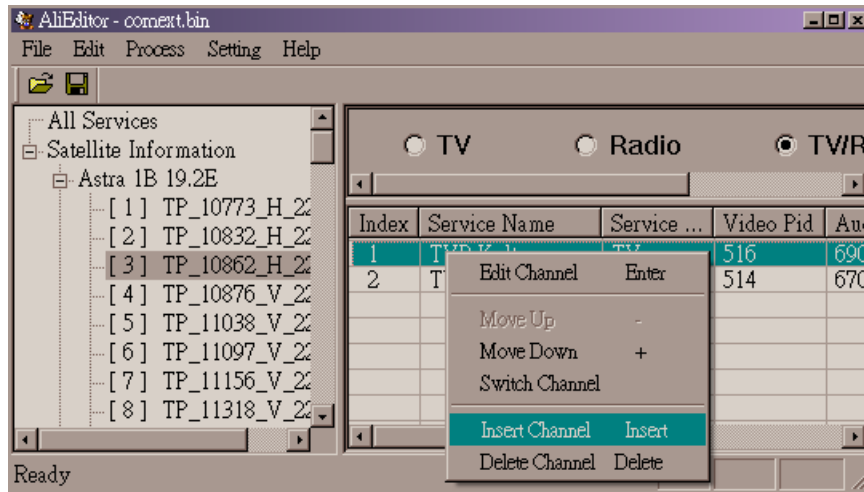
3.3 Delete a channel

Delete Channel	Delete
----------------	--------

You could delete a channel by **Delete Channel**.

3.4 Insert a channel

You could insert channels only in a TP. In All Services mode this function would be disabled.



F. How to save to a bin file

1. By **File/Save** or **Save as**, for you to save the bin file to PC.

